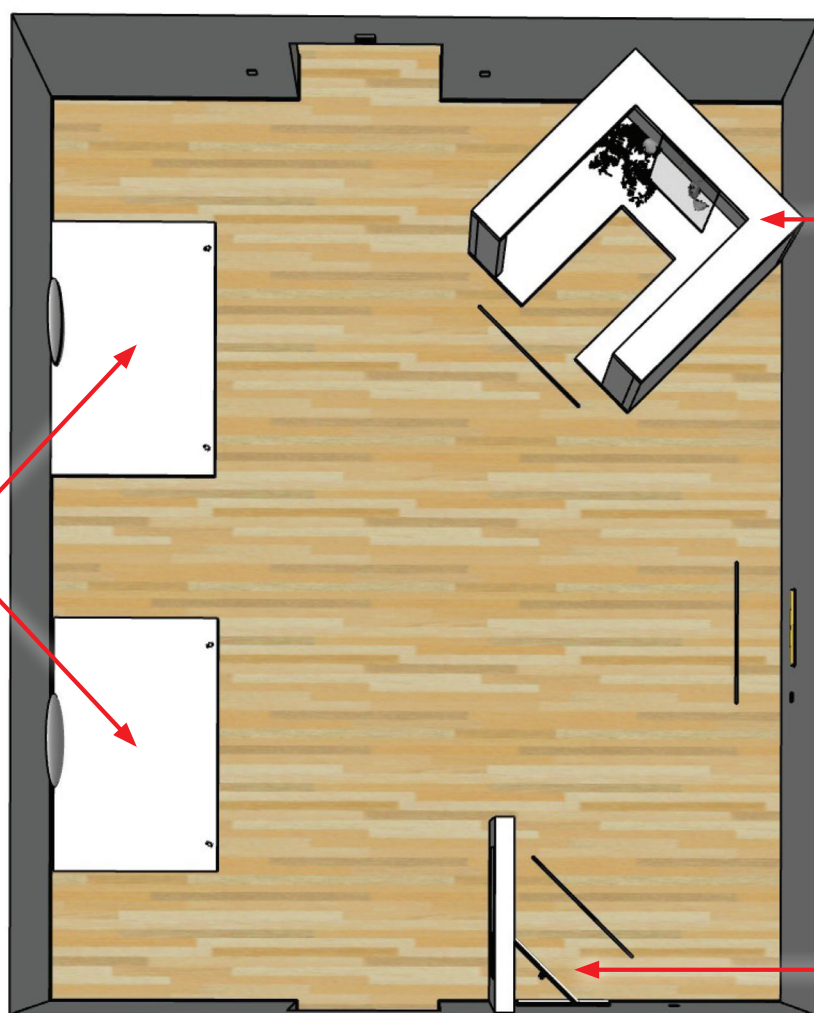


Plugged In Sensory Map

These are the light sources and sounds you can expect in the exhibition.



Neon tubes. Some flicker and produce a buzzing noise.

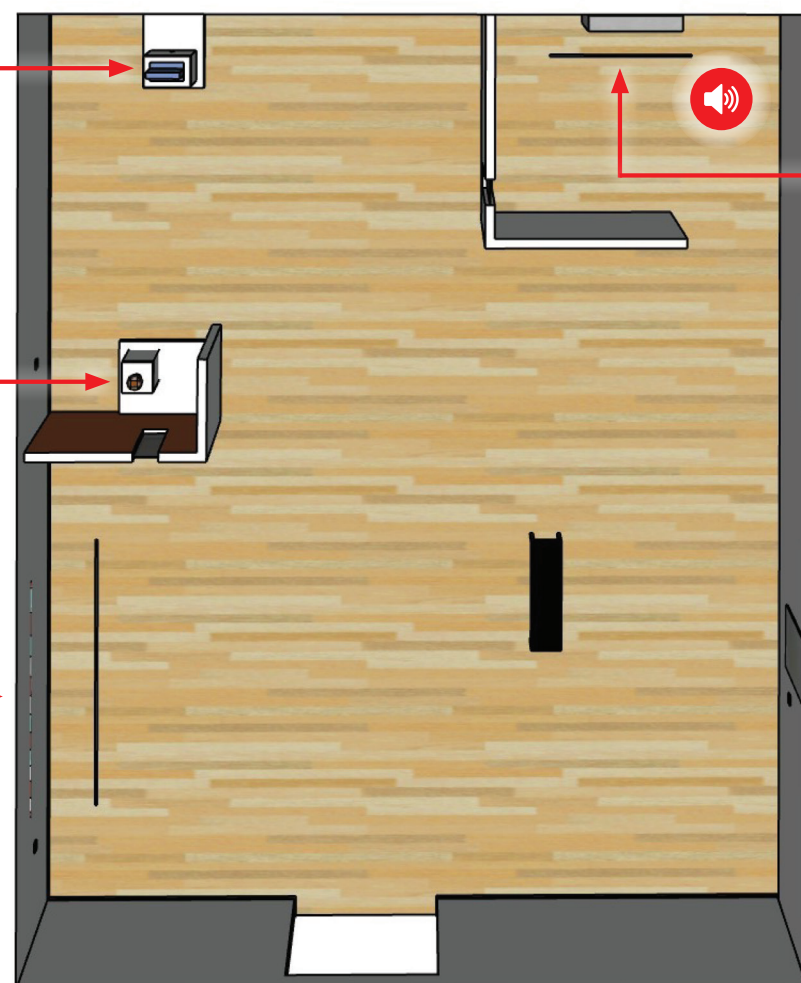


LED bulbs behind frosted glass

LED bulbs directed at the wall

Yellow fluorescent tubes

Red and white fluorescent tubes



LED bulbs under Plexiglas that turn on and off for about 2 minutes at a time.

LED bulbs under lampshade

Rows of incandescent lightbulbs behind Plexiglas that turn on and off, altering between every few seconds and every 2 minutes. All lights turn on at once every 30 minutes, accompanied by a mechanical noise.

Neon (argon) tubes

Blacklight directed at the wall that turns on for 1.5 minutes and off for 30 seconds.

EXHIBITION ENTRANCE