

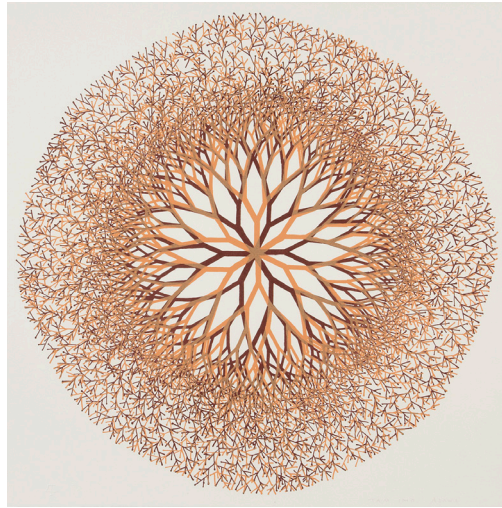
Home and Away: The Printed Works of Ruth Asawa

September 19, 2014–January 19, 2015 | Norton Simon Museum

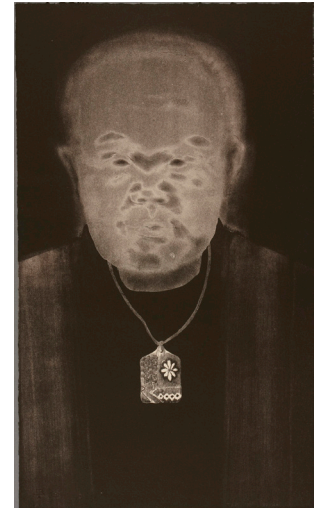
We are pleased to provide the following images for publicity relating to the exhibition. To receive digital versions of the images, please contact the Public Affairs department at (626) 844-6900 or media@nortonsimon.org.



Aiko, 1965
Ruth Asawa (American, 1926-2013)
Lithograph
Sheet: 22 x 22 in. (55.9 x 55.9 cm)
Norton Simon Museum, Anonymous Gift, 1966
P:1966.07.125
© 2014 Estate of Ruth Asawa



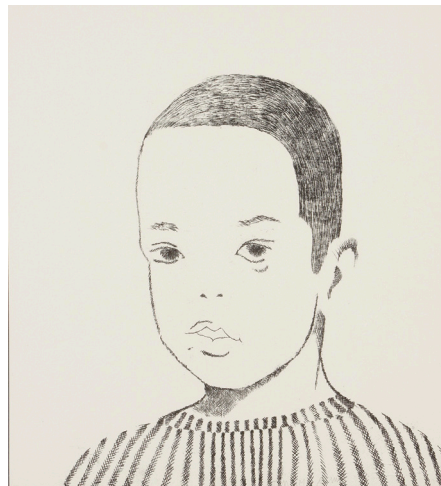
Desert Flower, 1965
Ruth Asawa (American, 1926-2013)
Lithograph, 2nd state
Sheet: 18-1/2 x 18-1/2 in. (47.0 x 47.0 cm)
Norton Simon Museum, Anonymous Gift, 1966
P:1966.07.119
© 2014 Estate of Ruth Asawa



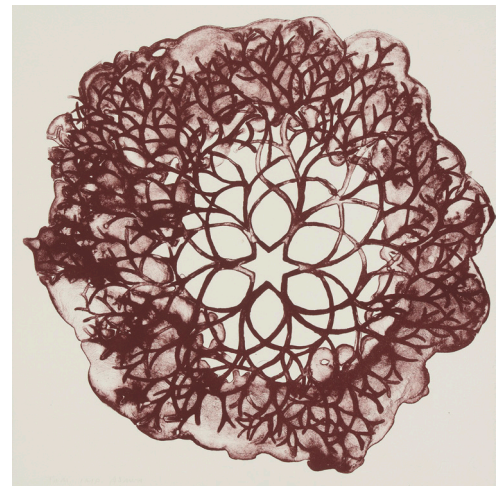
Umakichi, 1965
Ruth Asawa (American, 1926-2013)
Lithograph, 2nd state
Sheet: 22 x 13 in. (55.9 x 33.2 cm)
Norton Simon Museum,
Anonymous Gift, 1966
P:1966.07.129
© 2014 Estate of Ruth Asawa



Flowers V, 1965
Ruth Asawa (American, 1926-2013)
Lithograph
Sheet: 11 x 11 in. (27.9 x 27.9 cm)
Norton Simon Museum, Anonymous Gift, 1966
P:1966.07.097
© 2014 Estate of Ruth Asawa



Xavier, 1965
Ruth Asawa (American, 1926-2013)
Lithograph
Sheet: 11 x 9-1/2 in. (27.9 x 24.1 cm)
Norton Simon Museum, Anonymous Gift, 1966
P:1966.07.155
© 2014 Estate of Ruth Asawa



Flowers IX, 1965
Ruth Asawa (American, 1926-2013)
Lithograph
Sheet: 11 x 11 in. (27.9 x 27.9 cm)
Norton Simon Museum, Anonymous Gift, 1966
P:1966.07.101
© 2014 Estate of Ruth Asawa